

# Morris Solar Open House



WELCOME!







## Accelerating the future of energy, **together**

- The AES Corporation is a global energy company, with a focus in the U.S., that is accelerating the future of energy. AES has been developing and delivering innovative energy solutions to its customers for over 40 years. In the U.S. alone, AES successfully operates more than 450 solar projects that are in the ground and reliably producing clean energy across 25 states.
- AES is a market leader in clean energy development in the U.S. AES is also a diversified energy company, owning and operating two large investor-owned utilities in Indiana and Ohio, as well as other generation assets in the U.S. and worldwide.

**4.7** GW in operations

**50+** GW in development







# Morris Solar Project Overview

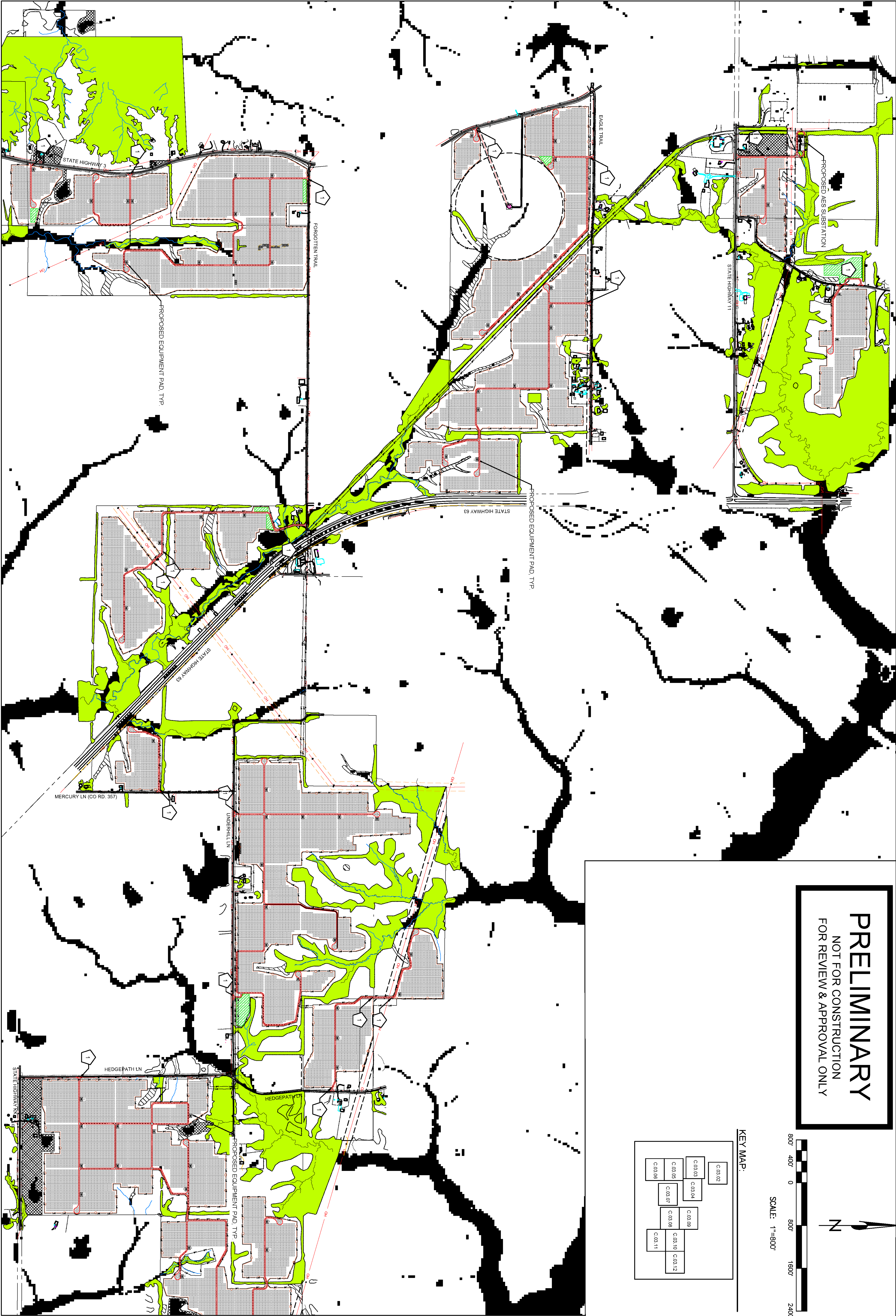
- Nameplate Capacity: **250 MW**
- Location: **Adair County, MO**
- Point of Interconnection: **Zachary 345 kV Substation**
- Project Footprint: **~1,100 acres**
- Environmental Benefits: reduce CO2 emissions by **~343,000 tons** per year (equivalent to powering **~36,000 homes'** energy use per year)
- Expected Commercial Operation Date (COD): **Spring 2025**



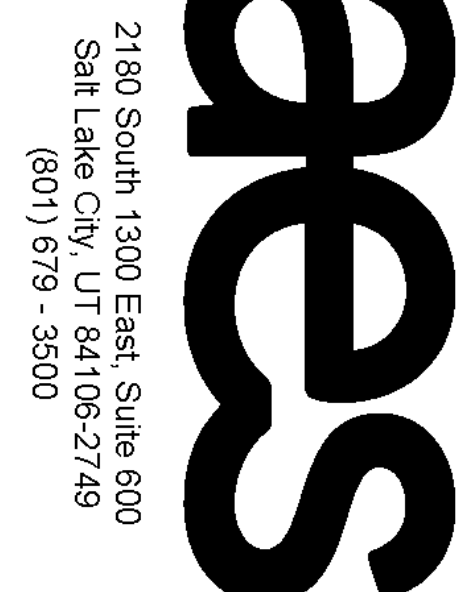








**PRELIMINARY**  
NOT FOR CONSTRUCTION  
FOR REVIEW & APPROVAL ONLY



PE STAMP:

KEY PLAN:

REVISIONS:	
NO.	DESCRIPTION
A	5-24-22 ISSUE FOR REVIEW
B	7-6-22 ISSUED FOR REVISION
PROJECT TITLE:	

MORRIS SOLAR

PROJECT LOCATION:

ADAIR COUNTY, MO

SHEET TITLE & DESCRIPTION:

PV CIVIL

OVERALL CIVIL SITE  
PLAN

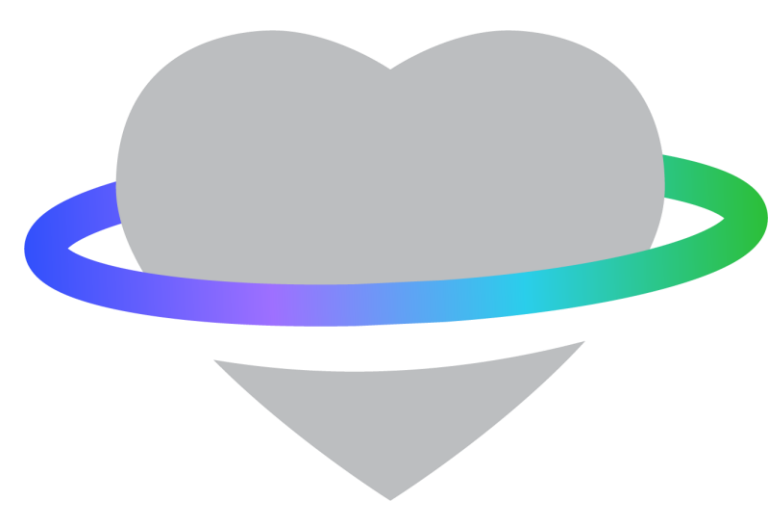
SCALE AT 24" x 36"

1" = 800'

SHEET NO.	REV
PV-C.03.01	B



# Community Benefit



## Community Engagement & Outreach

- AES is committed to strengthening positive impact through mutually beneficial partnerships in the communities where we work
- Our focus pillars include the following:
  - Partnering for access to safe, efficient, and affordable energy and basic services
  - Partnering for Inclusive Economic Growth & Education
  - Partnering for the Environment
  - Partnering for Community Health & Well-Being



## Economic Benefits

- **\$385 million** in capital investment
- **\$8.8 million** in estimated tax over 35 years of operation to Adair County and the **Kirksville R-III School District**
- **340+ jobs** during construction
- **6-10** full-time equivalent jobs
- Supporting local businesses including restaurants, food trucks, convenience stores, construction equipment, building materials and lodging.
- Project does not require additional County or City services, so no pressure on local services/resources

For more information, please contact [stakeholderrelations@aes.com](mailto:stakeholderrelations@aes.com)





# Environmental Studies & Agency Coordination



## Federal

- Nationwide Permit from U.S. Army Corps of Engineers
- Section 7 Consultation with U.S. Fish and Wildlife Service for Incidental Take Permit

## Local

- Compliance with Adair County Ordinances
- Road Maintenance & Use Agreement
- Right-of-Way & Encroachment Agreement
- Coordination with Emergency Services

## State

- State Historic Preservation Office
- Missouri Dept. Of Natural Resources

## Environmental & Technical Studies

- Critical Issues Analysis (July 2020)
- Raptor Nest Survey (April 2021)
- Desktop Cultural Resources Study (May 2021)
- Bat Habitat Suitability Assessment (July 2021)
- Mead's Milkweed Survey (September 2021)
- Geotechnical Report (March 2022)
- Wetland Delineation (May 2022)
- Phase 1 Cultural Resources Survey (October 2022)
- Phase 1 Environmental Site Assessment (December 2022)





# Solar Construction



## Safety

- At AES, we put safety first and it is our top core value
- There are not any peer-reviewed reports of solar panels causing health and safety issues
- Solar systems are governed by the same Building/Electrical/Fire codes that govern the construction of homes and other buildings in the community

## Impacts

- During development, impact studies are done to identify sensitive features of the project area so that we can construct the facility in a way that avoids any impacts to the environment
- The project will not impact stormwater runoff outside of the project area
- Once the project is built, it will be AES' financial and contractual obligation to restore county roads and bridges to their pre-construction condition

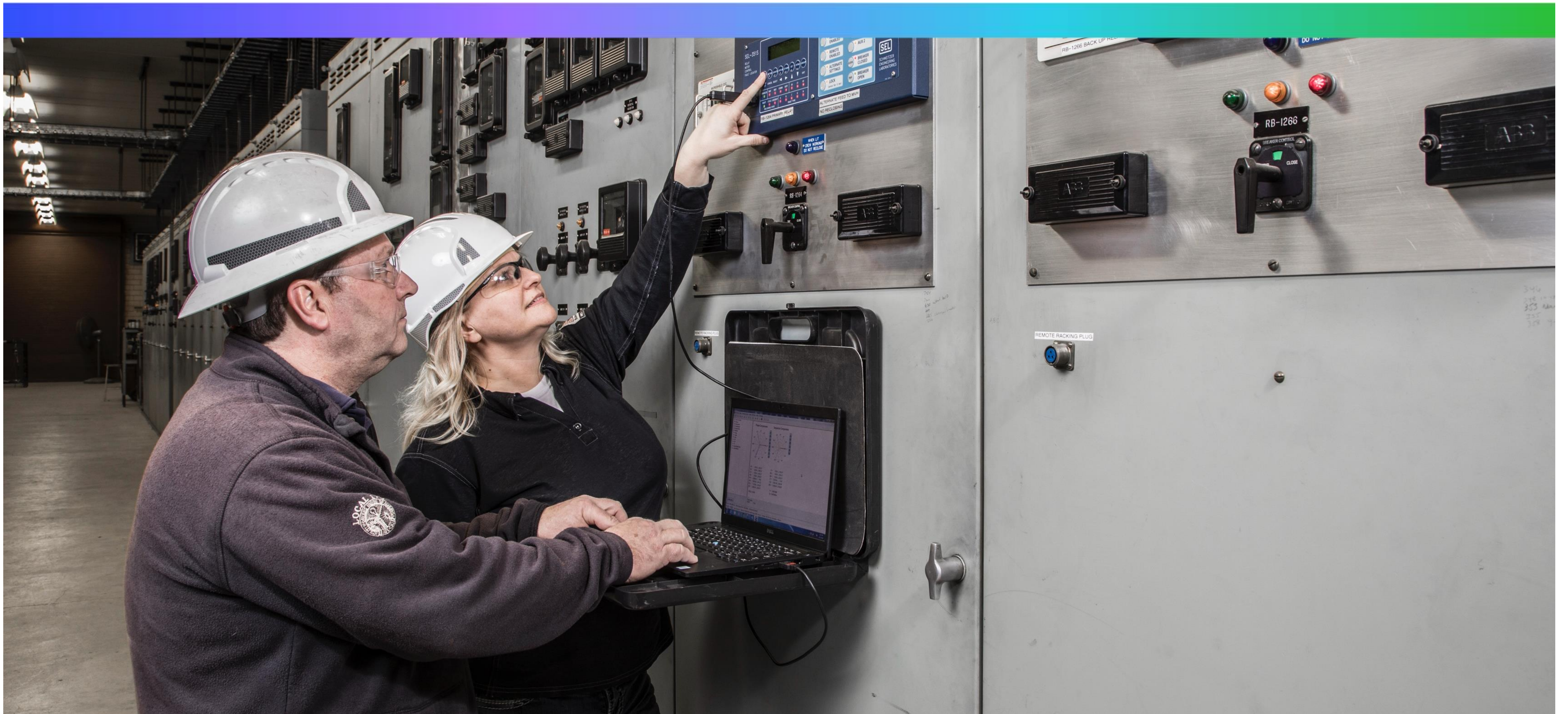
## Process

- The entire construction period of this project is expected to last approximately 19 months
- Construction will only take place during appropriate work hours
- Early on in construction, pile driving will take place and cause some noise over the course of roughly 2 months
- During the process of construction, nearby residents can expect
  - Minor increase in traffic on designated roads
  - Potential dust during pile driving
  - Larger trucks on haul roads during construction hours.
  - Once construction is over, the project will be a quiet neighbor and traffic will return to normal





# Solar Operations



## Monitoring

- 24-7 / 365 days a year remote monitoring
- Supervisory control and data acquisition (SCADA) system

## Maintenance

- Minimal annual maintenance will be required
- AES will regularly inspect project site to ensure all components are operating properly
- AES construction and operations team will be on-call in the event of a maintenance issue
- AES typically contracts with a local landscaping company to provide services including any vegetative buffers to assist with viewshed

## Security

- Project sites will be fenced off with strict, electronically controlled security access gates
- Securely installed enclosed electrical equipment will be on-site
- Local fire & rescue will have access to the site as needed